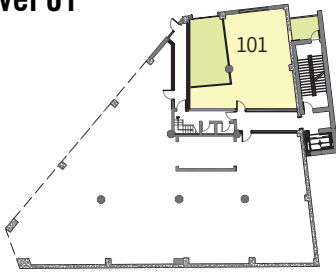


Level 01



Unit 101 1168 SF*
 1 BEDROOM | 1 BATH UNIT
 + Private Garage
 + 1 Storage Space

Historic Elements

Exposed brick and concrete throughout the unit provides a contrast to the new construction within the existing building shell. Exposed concrete ceilings with heights of up to 11'-0".

New Modern Features

Each residential suite includes Energy Star rated stainless steel appliances. Stained wood cabinets, granite countertops, and a subway tile backsplash provide contemporary details the kitchen. Modern finishes are installed throughout the unit, including bamboo flooring.

Price \$189,500

Please contact owner/agent for pricing information.

** Floor plans are not to scale. Dimensions and area calculations are estimates and include private balconies. Actual measurements may vary. Buyers should independently verify. The developer reserves the right to alter and/or improve product at any time.*



PLAN KEY:

01	LIVING ROOM
02	KITCHEN
03	MECHANICAL CLOSET
04	CLOSET
05	MASTER BATH
06	LAUNDRY
07	MASTER BEDROOM
08	GARAGE



Residential Sales:

KIMBERLY DIXON HAMILTON, BROKER | Downtown Realty Inc.
 865-588-5535 | Kimberly@KnoxvilleDowntownRealty.com

SANDERS PACE
 ARCHITECTURE



SOUTHEASTERN GLASS
 A New Angle on Downtown Living

555 West Jackson Ave, Knoxville, TN 37902 865-588-5535
 SoutheasternGlass.com [f/SoutheasternGlass](https://www.facebook.com/SoutheasternGlass)
 Historic Jackson/Depot Redevelopment district