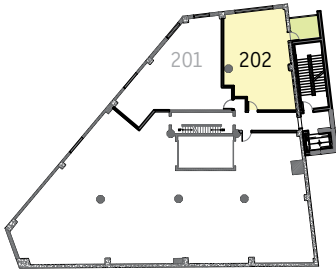


Level 02



Unit 202 872 SF*

1 BEDROOM | 1 BATH UNIT

- 109 SF* Private Exterior Deck
- 763 SF* Interior Space
- + 1 Parking Space
- + 1 Storage Space

Historic Elements

Exposed brick and concrete throughout the unit provides a contrast to the new construction within the existing building shell. Existing historic steel window frames have been refurbished with insulated glazing panels. Exposed concrete ceilings with heights of up to 11'-0".

New Modern Features

Each residential suite includes Energy Star rated stainless steel appliances. Custom wood cabinets, granite countertops, and a subway tile backsplash provide contemporary details in the kitchen. Modern finishes are installed throughout the unit, including bamboo flooring.

SOLD

** Floor plans are not to scale. Dimensions and area calculations are estimates and include private balconies. Actual measurements may vary. Buyers should independently verify. The developer reserves the right to alter and/or improve product at any time.*



PLAN KEY:

01	LIVING ROOM
02	KITCHEN
03	MASTER BEDROOM
04	EXTERIOR DECK
05	MASTER BATH
06	CLOSET
07	LAUNDRY
08	MECHANICAL CLOSET



Residential Sales:

KIMBERLY DIXON HAMILTON, BROKER | Downtown Realty Inc.
865-588-5535 | Kimberly@KnoxvilleDowntownRealty.com

SANDERS PACE
ARCHITECTURE



RESIDENTIAL SALES



DEVELOPMENT BY

SOUTHEASTERN GLASS

A New Angle on Downtown Living

555 West Jackson Ave, Knoxville, TN 37902 865-588-5535

SoutheasternGlass.com [f/SoutheasternGlass](https://www.facebook.com/SoutheasternGlass)



Historic Jackson/Depot Redevelopment district