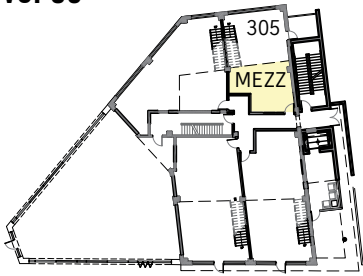


Level 03



Unit 305-Mezz 484 SF*

1 BEDROOM | 1.5 BATH UNIT

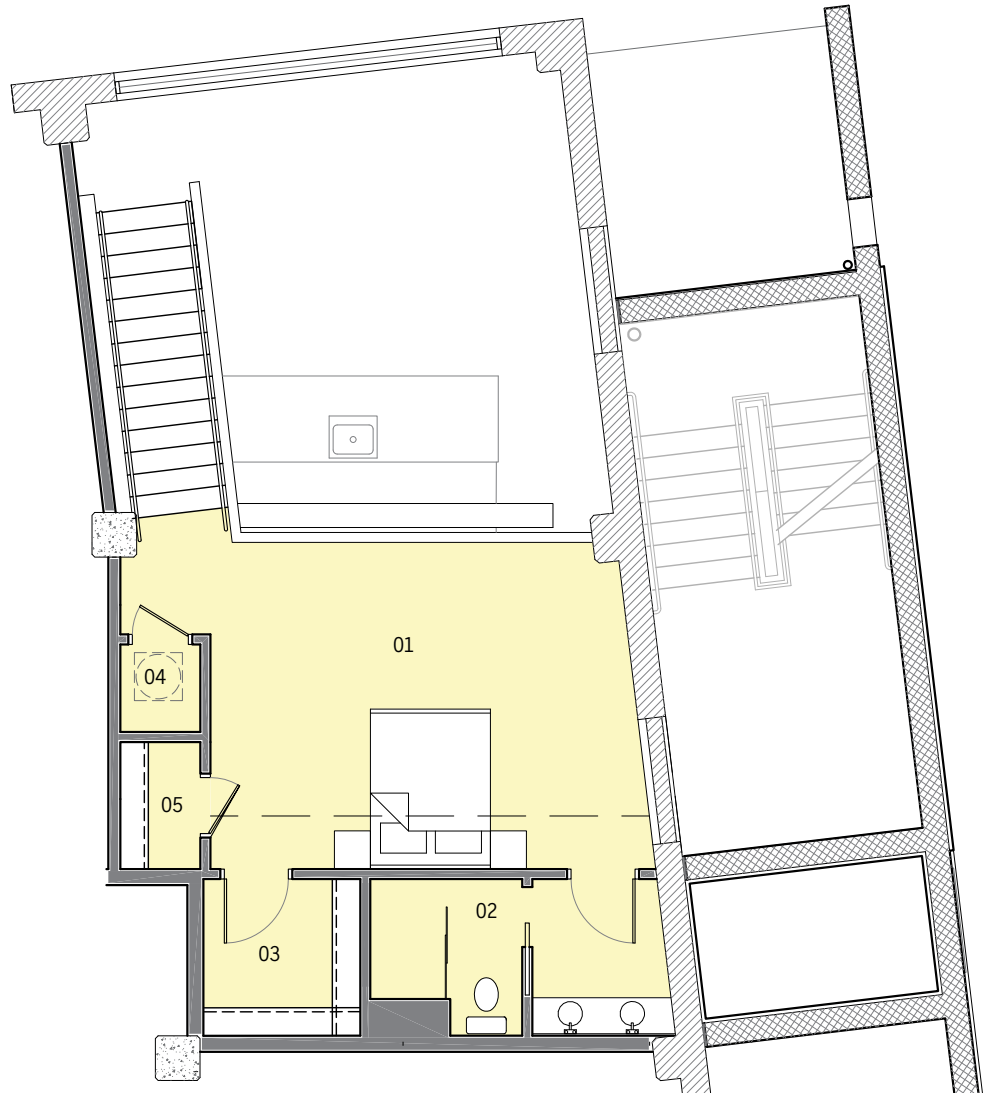
- 484 SF* Interior Space
- + 1 Parking Space
- + 1 SF* Storage Space

Historic Elements

Exposed brick and concrete throughout the unit provides a contrast to the new construction within the existing building shell. Exposed concrete ceilings with heights of up to 11'-0".

New Modern Features

Each residential suite includes Energy Star rated stainless steel appliances. Custom wood cabinets, granite countertops, and a subway tile backsplash provide contemporary details in the kitchen. Modern finishes are installed throughout the unit, including bamboo flooring.



* Floor plans are not to scale. Dimensions and area calculations are estimates and include private balconies. Actual measurements may vary. Buyers should independently verify. The developer reserves the right to alter and/or improve product at any time.

PLAN KEY:

01	MASTER BEDROOM
02	MASTER BATH
03	WALK-IN CLOSET
04	MECHANICAL CLOSET
05	CLOSET



Residential Sales:

KIMBERLY DIXON HAMILTON, BROKER | Downtown Realty Inc.
865-588-5535 | Kimberly@KnoxvilleDowntownRealty.com

SANDERS PACE
ARCHITECTURE



SOUTHEASTERN GLASS

A New Angle on Downtown Living

555 West Jackson Ave, Knoxville, TN 37902 865-588-5535

SoutheasternGlass.com [f/SoutheasternGlass](https://www.facebook.com/SoutheasternGlass)



Historic Jackson/Depot Redevelopment district