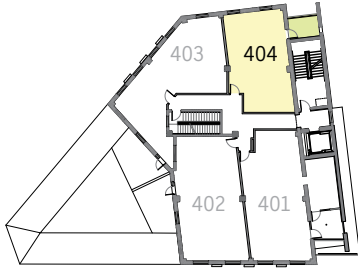


## Level 04



### Unit 404 831 SF\*

1 BEDROOM | 1 BATH UNIT

- 722 SF\* Interior Space
- 109 SF\* Private Exterior Deck
- + 1 Parking Space
- + 1 Storage Space

### Historic Elements

Exposed brick and concrete throughout the unit provides a contrast to the new construction within the existing building shell. Existing historic steel window frames have been refurbished with insulated glazing panels. Exposed concrete ceilings with heights of up to 11'-0".

### New Modern Features

Each residential suite includes Energy Star rated stainless steel appliances. Custom wood cabinets, granite countertops, and a subway tile backsplash provide contemporary details in the kitchen. Modern finishes are installed throughout the unit, including bamboo flooring.



### SOLD

*\*\* Floor plans are not to scale. Dimensions and area calculations are estimates and include private balconies. Actual measurements may vary. Buyers should independently verify. The developer reserves the right to alter and/or improve product at any time.*

#### PLAN KEY:

01	LIVING ROOM
02	EXTERIOR DECK
03	KITCHEN
04	FULL BATH
05	BEDROOM
06	WALK-IN CLOSET
07	LAUNDRY
08	MECHANICAL CLOSET
09	CLOSET



Residential Sales:

**KIMBERLY DIXON HAMILTON, BROKER** | Downtown Realty Inc.  
865-588-5535 | [Kimberly@KnoxvilleDowntownRealty.com](mailto:Kimberly@KnoxvilleDowntownRealty.com)

**SANDERS PACE**  
ARCHITECTURE



**SOUTHEASTERN GLASS**

A New Angle on Downtown Living

555 West Jackson Ave, Knoxville, TN 37902 865-588-5535

[SoutheasternGlass.com](http://SoutheasternGlass.com) [f/SoutheasternGlass](https://www.facebook.com/SoutheasternGlass)



Historic Jackson/Depot Redevelopment district